

WELCOME

MONTHLY EQUITY SERIES 2020

SHARRONE BLANCK,
EUREKA NAACP PRESIDENT

DR CHRIS HARTLEY,
HCOE SUPERINTENDENT



MONTHLY EQUITY SERIES

INTERSECTIONS
OF STUDENT-
CENTERED
EQUITY &
INTERRUPTING
COLONIAL
PRACTICES

THURSDAY, OCTOBER 22, 2020



OPENING COMMENTS

- Outcomes of policies are important for students and families most impacted
- Important to start this conversation by focusing on where we are currently, in the midst of pandemic





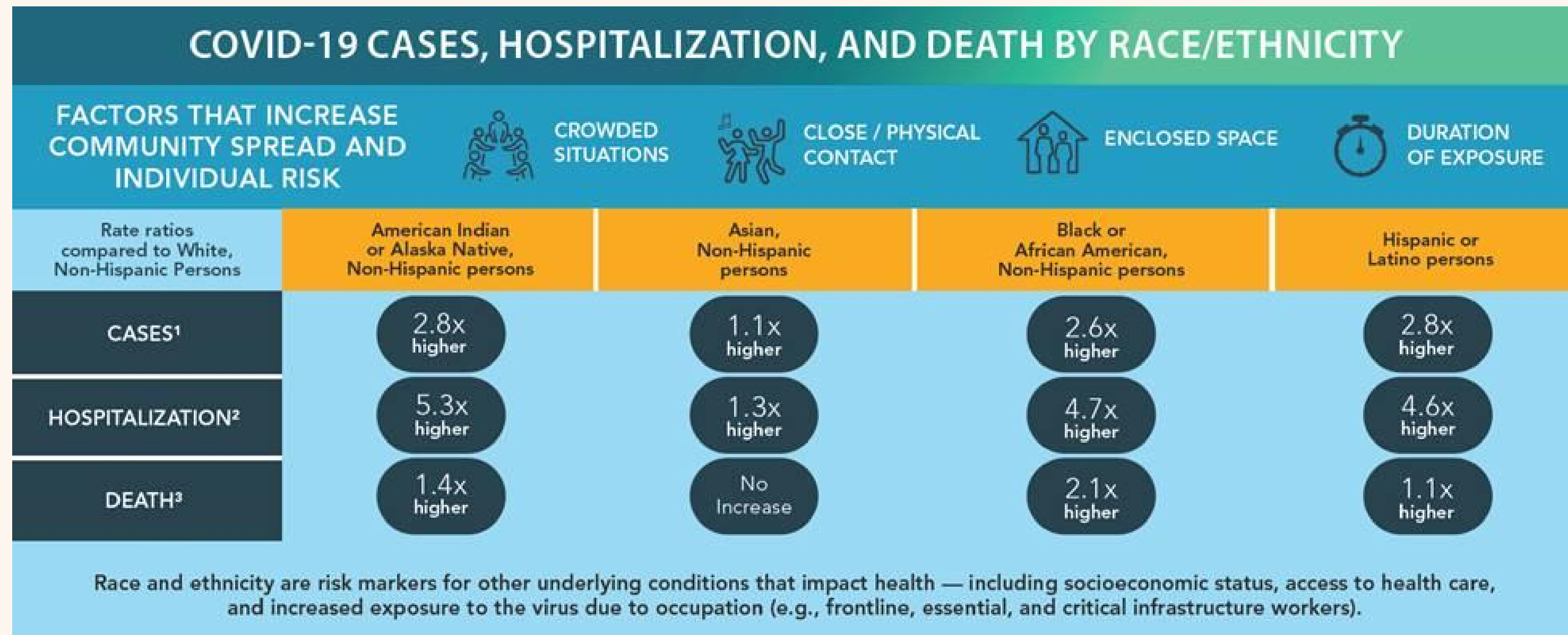
CENTERING
STUDENTS

MOST
IMPACTED
BY THE

PANDEMIC

- Not all students and families are being impacted at the same rate
- The impact is being felt the most by Native, Black and LatinX students and families

CDC - IMPACT OF COVID-19



<https://www.cdc.gov/coronavirus/2019-ncov/downloads/covid-data/hospitalization-death-by-race-ethnicity.pdf>

BUILDING COMMUNITY

Educational
Leaders have
an opportunity
to intentionally
create
community

BUILDING COMMUNITY

During this time you can reach out to BIPOC students and families at your school and let them know you are present and listening

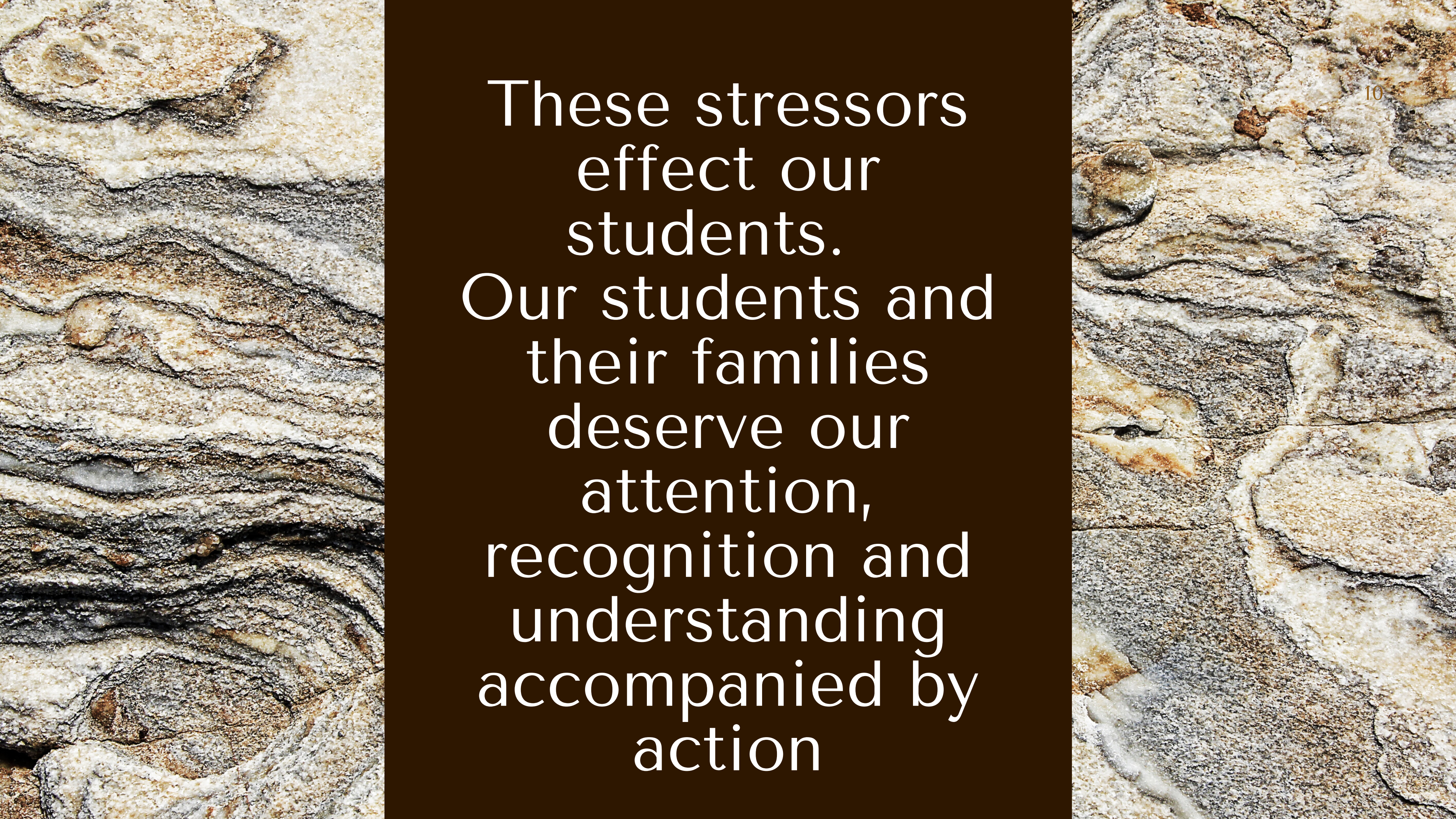
BUILDING COMMUNITY

Create a community that is welcoming and safe for those most impacted during this time, Native, Black and LatinX students and families

COVID AFFECTS OUR COMMUNITY IN DIFFERENT WAYS

- Access to teaching and learning via technology
- Reflect on the Latino Net/Centro De Pueblo Town Hall: community members shared their struggles, fears and anxieties.
- People of Color are are often employed as essential workers, at most risk (front line workers)
- Infection rates are disproportionate by race





These stressors
effect our
students.
Our students and
their families
deserve our
attention,
recognition and
understanding
accompanied by
action

LISTENING SESSIONS

Create spaces for Black, Indigenous, LatinX and People of Color to share their experiences and needs with school administrators and teachers.

ATTEND THE EQUITY SERIES

Be engaged.

Learn with humility.

Actively listen.



ACTIONS
YOU CAN
TAKE NOW

SCHEDULE PROFFESIONAL DEVELOPMENT THAT SUPPORTS EQUITY ON ALL LEVELS

Contact the TK-12 Equity Partnership. Schedule initial and ongoing trainings during paid professional development days so all teaching staff can attend.




ACTIONS
YOU CAN
TAKE NOW

CHALLENGE YOURSELF TO LEARN ABOUT THE SOCIAL CONSTRUCT OF RACE

Be vulnerable. Find your place with
being uncomfortable with the process
and keep learning.

The background of the slide features a marbled paper pattern with swirling veins of grey, white, and brown. A solid dark brown horizontal band runs across the middle of the image, serving as a backdrop for the text.

ACTIONS
YOU CAN
TAKE NOW



Do not simply
attend the
Equity Series
this year

Let it change
you