



NorCal  
Native American Studies  
Model Curriculum  
(NASMC)

*Project Update*

February 15, 2023  
12:00pm-1:00pm



Humboldt County  
Office of Education





# Land Acknowledgment

Please type in the chat:

Your name, role, county and  
tribal lands in which you reside.



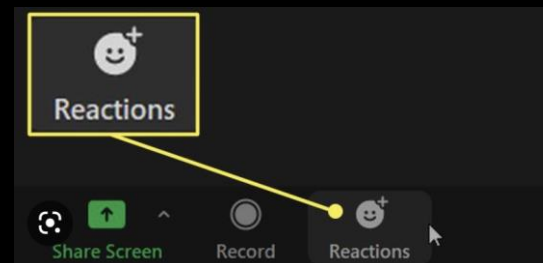
# Meeting Norms

- Honor each other's ideas and experiences
- Assume good intent
- Appreciation for multiple perspectives
- Ensure equity of voice
- Allow reflective silence
- Have a growth mindset

Adapted from "[All Social Change Starts With a Conversation](#)"  
by Margaret Wheatley



\*Raise hand if you have question or comment



## New NorCal NASMC Team members



Rebecca Lowry  
(Delaware Tribe of Indians),  
Learning Specialist, HCOE



Maggie Peters  
(Yurok, Karuk),  
Learning Specialist, HCOE

# Native American Studies Curriculum Leads



**Nicole Lim, J.D.**  
Pomo

---

California Indian Museum and  
Cultural Center  
California Indian Education for All



**Joely Proudfit, Ph.D.**  
Luiseño/Payomkowishum

---

Cal State University, San Marcos  
California Indian Culture and  
Sovereignty Center  
California Indian Education for All



**Cutcha Risling Baldy, Ph.D.**  
Hupa, Yurok and Karuk

---

Cal Poly Humboldt  
Native American Studies Dept.



# OVERVIEW



## WHAT IS THE NASMC?

The California Native American Studies Model Curriculum (NASMC) is defined as lesson plans, primary source documents, planning resources, teaching strategies, and professional development activities to assist educators in teaching about Native American Studies. The **San Diego County Office of Education** (SDCOE) and the **Humboldt County Office of Education** (HCOE) have been selected as lead agencies in the facilitation and development of the NASMC.

By intentional design, the model curriculum will be developed in partnership with California Tribes, other COEs, and native youth serving organizations. NASMC is a statewide partnership effort funded through the California Department of Education.

NASMC is a statewide partnership effort funded through the California Department of Education. This three-year project has been funded by CDE for \$3,900,000 (allocations are \$1.95M to HCOE and \$1.95M to SDCOE).

---





### **AB 738 (Pupil Instruction, 2017, Límon)**

The passage of Assembly Bill 738 of 2017 requires the model curriculum to be developed with participation from specified entities, including, among others, certain Native American tribes, and would require the Governor's Tribal Advisor, the Native American Heritage Commission, and the State Department of Education to assist the commission in statewide tribal consultations with those tribes.

### **AB 167 Model Curriculum Projects**

Assembly Bill 167, Chapter 252, Statutes of 2021 amended California Education Code sections 33540.2, 33540.4, 33540.6 and 51226.9, for the development and maintenance of model curricula relating to the Vietnamese American refugee experience, the Cambodian genocide, Hmong history and cultural studies, and Native American studies.





## **TRIBALLY DRIVEN AND AUTHORED RESOURCES**

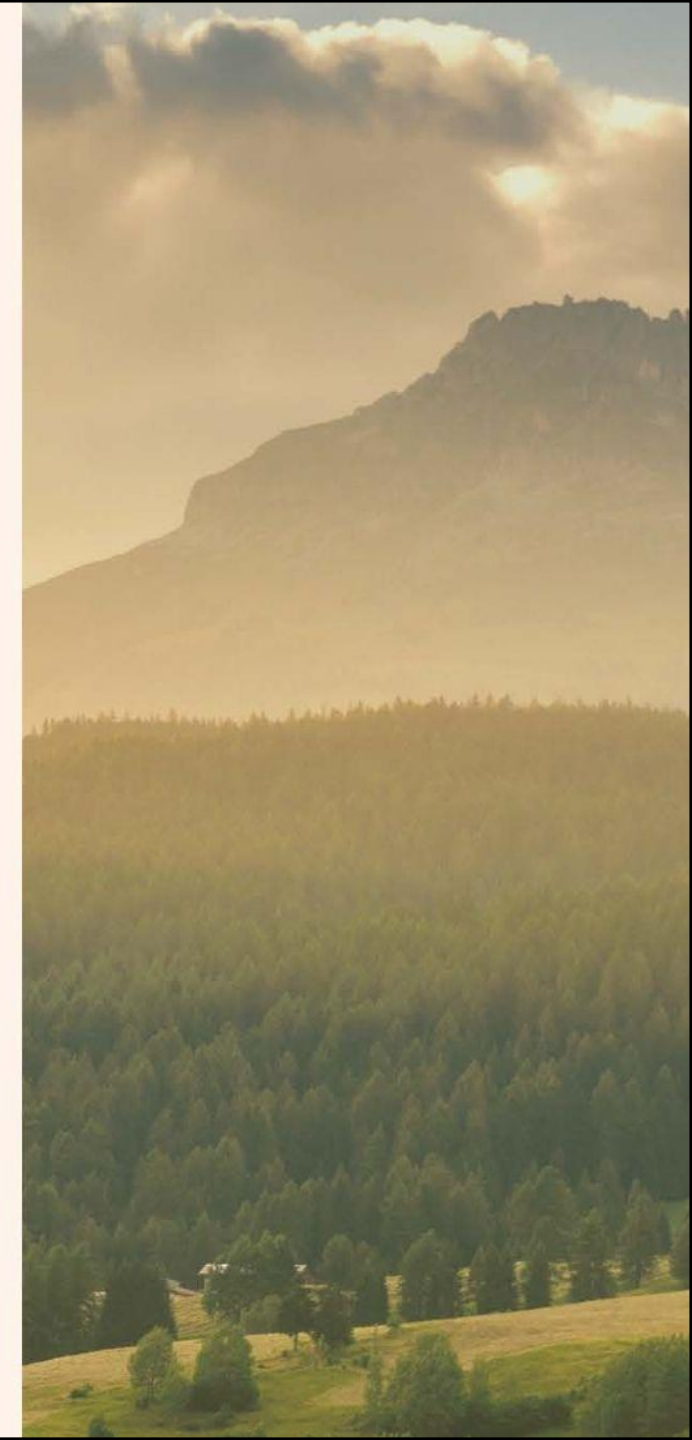
Currently, the instructional resources available for use in California public schools do not include accurate historic and contemporary information concerning Native Americans in the United States and especially in California.

Because this expertise resides within the tribes themselves, all efforts to develop a model curriculum for Native American studies will be tribally driven.



# Project NASMC Purpose:

- This three-year project responds to the urgent need to design culturally responsive, placed-based instructional resources and champion California Indian and Native American authored digital units and resources.
- The NASMC will be culturally responsive curriculum and educational resources that improve representations and classroom climates for teaching and learning about California's first people
- The NASMC professional learning will help teachers and schools educate children and youth about the diverse histories, cultures and contributions of California Native peoples.



## Project NASMC Regional Design:

Project NASMC leverages the California County Superintendents Educational Services Association's (CCSESA) 11 service regions. CCSESA provides the organizational mechanism for the 58 County Superintendents of Schools to design and implement statewide programs.

**Humboldt COE works with Regions 1 to 3 (55 CA tribes)**

**San Diego COE works with Regions 4 to 11 (54 CA tribes)**



# Supporting Relationships with Tribal Communities and COEs



## NorCal Native American Studies Model Curriculum

# Listening Sessions

For Native parents, educators and those who work with Native youth

The California Native American Studies Model Curriculum (NASMC) will support the design and development of lesson plans, primary source documents, planning resources, teaching strategies, and professional development activities to assist educators in teaching about California Native American Studies.

The NASMC is a statewide partnership effort funded through the California Department of Education. The Humboldt County Office of Education will host several virtual and in-person NASMC Community Engagement Listening Sessions in Northern California. Perspectives and voices of California tribal community members, Native American youth, educators, and cultural bearers will lead the development of NASMC.

During NASMC Listening Sessions, participants will:

- Learn about goals and potential outcomes of the NAS Model Curriculum
- Discuss their hopes for the NAS Model Curriculum
- Provide feedback on potential curriculum topics and current educational resources



For more information: [hcoe.org/nasmc](https://hcoe.org/nasmc)  
Please RSVP for in-person listening sessions and direct inquiries to:  
Rebecca Lowry, Learning Specialist  
RLowry@HCOE.org • 707-582-2175



### Virtual Listening Sessions

Tuesday, Feb. 28 | 6-7:30pm  
Wednesday, March 22 | 6-7:30pm

### In-Person Listening Sessions

6:00-7:30pm unless otherwise noted

#### Monday, March 13

NCIDC | Eureka, CA

#### Tuesday, March 14

Blue Lake Rancheria | Blue Lake, CA

#### Thursday, March 16

Del Norte County Office of Education  
Crescent City, CA

#### Tuesday, March 28

CA Indian Museum & Cultural Center  
Santa Rosa, CA

#### Wednesday, March 29

Seavey Center | Rocklin, CA

#### Thursday, March 30 | 9am-4pm\*

Butte College | Oroville, CA 95963

#### Friday, March 31 | 12-1:30pm

Woodfords Indian Education Center  
Markleeville, CA

#### Saturday, April 1

12:00pm-2:00pm  
Fort Bidwell Indian Community  
Fort Bidwell, CA

#### Monday, April 3 | 5:30pm-7pm

Susanville Indian Rancheria  
Susanville, CA

#### Saturday, April 8 | 11am-6pm\*

Cal Poly Humboldt | Arcata, CA

\*One-on-one discussions and surveys

Flyer is in on website.

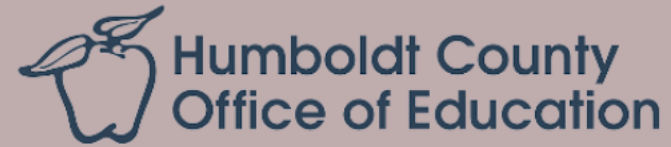
Additional meetings will be added to website



website

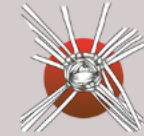
# PROJECT NATIVE AMERICAN STUDIES MODEL CURRICULUM (NASMC)

COUNTY OFFICE OF ED  
NASMC PROJECT LEADS



NATIVE AMERICAN STUDIES  
CURRICULUM LEADS

Nicole Lim, J.D. (Pomo)  
Joely Proudfit, Ph.D. (Luiseño/Payomkowishum)  
Cutcha Risling Baldy, Ph.D. (Hupa, Yurok and Karuk)



CALIFORNIA  
INDIAN  
MUSEUM  
& CULTURAL  
CENTER



NASMC GUIDING LEADERS

Will serve as key contacts with tribal communities; support regional engagement of tribal families and communities; author and review curriculum, and attend monthly NASMC Guiding Leaders meetings and quarterly NASMC Task Force meetings

NASMC TASK FORCE

Will author, improve, vet, and endorse NASMC units and educational resources. The team includes tribal education leaders, members of California tribal organizations, regional American Indian cultural content experts, NAS researchers, scholars, and regional COE and LEA educational leaders. Will attend quarterly NASMC Task Force meetings.

NATIVE AMERICAN STUDIES  
CURRICULUM PARTNERS

Collaborate with CA tribal community groups to research and gather NAS curriculum; support the engagement of tribal families; research, author and initially review NAS curriculum, and attend NASMC Curriculum Huddles bi-weekly..

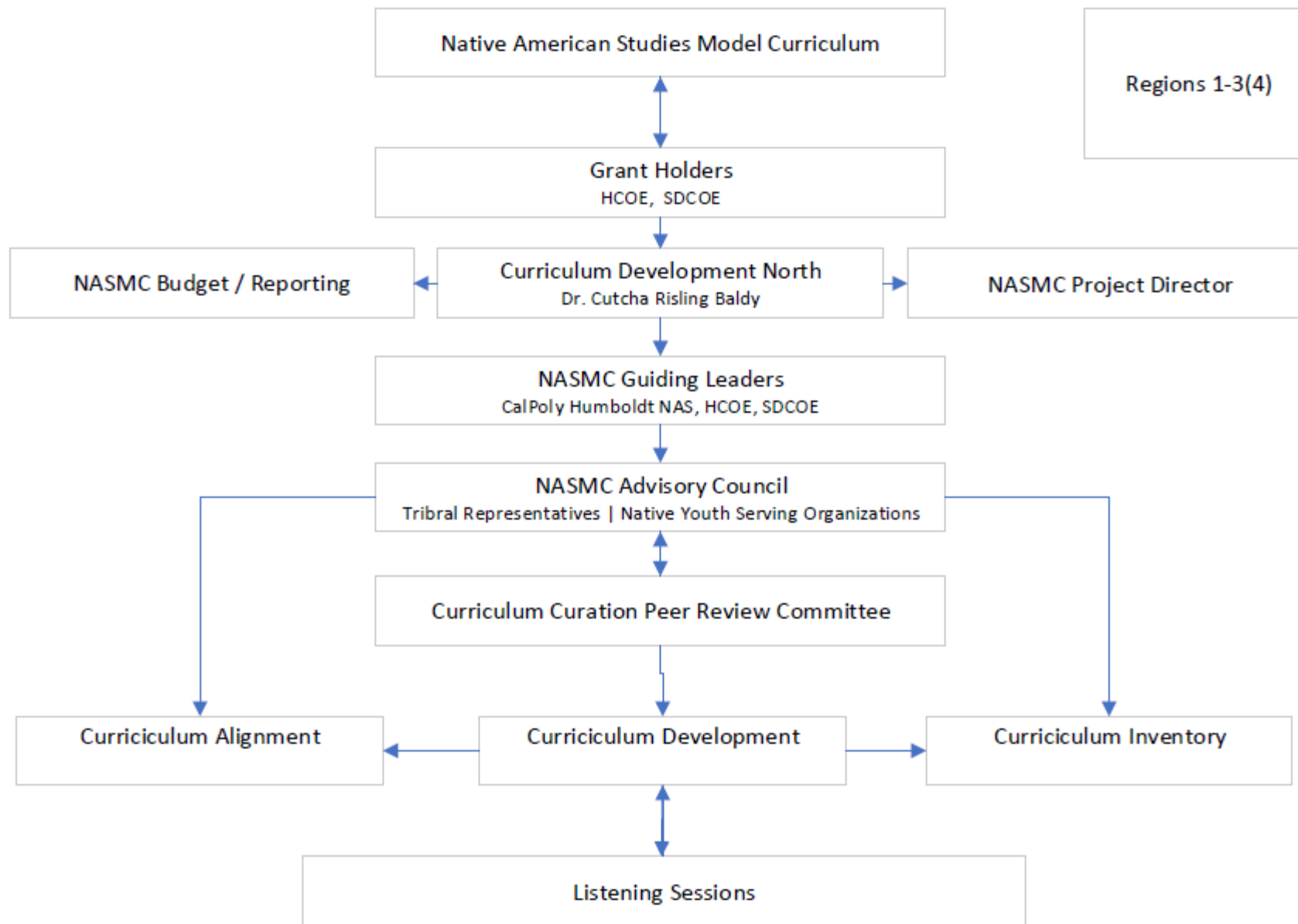
NASMC AGENCIES AND  
IHE PARTNERS

Advertise and participate in regional Listening Circle sessions; encourage engagement with tribes located in their county; support research and curriculum writing; recruit American Indian cultural content experts for NASMC Taskforce

NASMC REGIONAL COE LEADS

Advertise and participate in regional Listening Circle sessions; encourage engagement and build relationships with tribes located in their county; support research; recruit American Indian cultural content experts for NASMC Taskforce





# Native American Studies Model Curriculum Design Process Aug. 2022 to June 2025

Phase  
3

## REFINEMENT, PUBLISHING, AND PROFESSIONAL LEARNING

July 2024 to June 2025

Continue to offer, receive and compile public input on Draft 2 of NASMC

NASMC advisories review and vet NAS curricular resources with tribes, IHEs, COEs, LEAs, and agencies

Incorporate guidance and feedback from NASMC Taskforce, SMCCC, NAHC, CTCA, tribal community input, teachers, students, and public input

Model Curriculum Writing and Revising

- Continue writing and revising NASMC
- Draft 3 of NAS Model Curriculum to CDE
- Develop virtual NASMC professional learning and digital curriculum guidance
- Finalize NASMC that is ready for upload in CHSSP online platform

Phase  
2

## CURRICULUM DESIGN AND DEVELOPMENT

July 2023 June 2024

Communicate and Plan Community Input and Engagement Sessions for feedback

Offer Community Input, Listening Circles, Focus Groups, and Surveys on drafts of NASMC

NASMC advisories research, gather, and vet NAS curricular resources with tribes, IHEs, COEs, LEAs, and agencies

Feedback from NASMC Taskforce, Statewide Model Curriculum Coordinating Council, Native American Heritage Commission, and CA Tribal Chairpersons Association, and teacher and student feedback

Model Curriculum Development and Writing

- Continue writing and revising NASMC
- Draft 2 of NAS Model Curriculum
- Develop virtual NASMC professional learning and curriculum guidance

Phase  
1

## LISTEN, GATHER, AND ENGAGE

Aug. 2022 to June 2023

Communicate and Plan Community Input and Engagement Sessions

Offer Community Input, Engagement Sessions, Listening Circles, and Surveys

NASMC advisories research, gather, and vet NAS curricular resources with tribes, IHEs, COEs, LEAs, and agencies

Model Curriculum Development and Writing

- Sample of researched NASMC course outlines, units, and lessons
- NAS Model Curriculum Outline
- Draft 1 of NAS Model Curriculum
- Develop virtual NASMC professional learning and digital curriculum guidance





Questions?