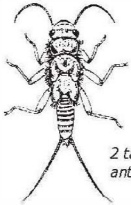


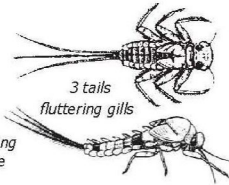
Macroinvertebrate Identification Key

GROUP 1 – Very Intolerant of Pollution



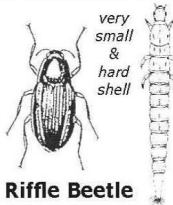
2 tails long antennae

Stonefly Nymph



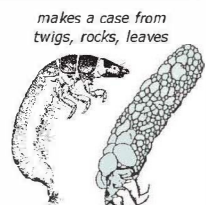
3 tails fluttering gills

Mayfly Nymph



very small & hard shell

Riffle Beetle Adult & Larva

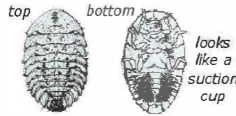


makes a case from twigs, rocks, leaves

Caddisfly Larva



Dobsonfly Larva



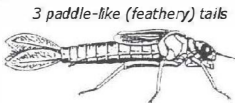
Water Penny Larva



Right-Handed Snail

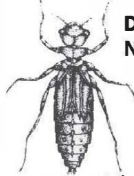
must be alive to count

GROUP 2 – Moderately Intolerant of Pollution



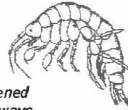
3 paddle-like (feathery) tails

Damselfly Nymph



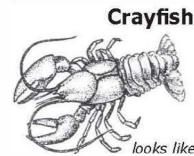
Dragonfly Nymph

no tails large eyes



flattened side-ways & swims on side

Scud

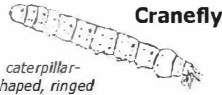
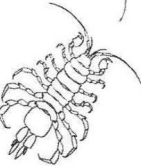


Crayfish

looks like a mini-lobster

Sowbug

flattened top to bottom (looks like a pill bug)



Cranefly

caterpillar-shaped, ringed



Clam/Mussel

must be alive to count

GROUP 3 – Fairly Tolerant of Pollution



Midge Larva

small, but visible head intense wiggler



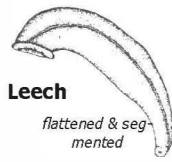
Planaria

2 eye spots & very small



Black Fly Larva

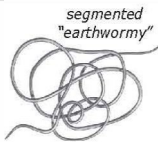
one end is swollen



Leech

flattened & segmented

GROUP 4 – Very Tolerant of Pollution



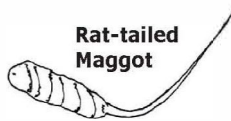
Aquatic Worms

segmented "earthwormy"

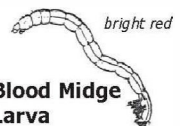


Left-Handed Snail

must be alive to count



Rat-tailed Maggot



Blood Midge Larva

bright red